

2013 Montana Wolf Hunting Season Report



About the Wolf Season

- ❖ Season closed Mar. 15, 230 total wolves harvested; 143 hunted and 87 trapped.
- ❖ Season modifications
 - General Season extended to March 15th.
 - An increased bag limit of 5 in any total combination of general or trap.
 - Regions 1-5 require a minimum pan tension of 10 pounds to reduce incidental captures of lynx, wolverines, and other non-target species.

❖ Wolf Management Unit harvests:

WMU	Hunter	Trapper	Total
100	17	11	28
101	19	19	38
110	1	-	1
121	11	5	16
130	8	10	18
200	5	10	15
210	13	4	17
250	10	10	20
280	2	-	2
290	9	7	16
310	11	2	13
313	4	-	4
316	2	-	2
320	3	-	3
330	8	1	9
390	14	2	16
400	6	6	12
Grand Total	143	87	230

Wolf Hunting

- ❖ 180 resident and 8 nonresident hunters harvested wolves.
 - 51 of 58 wolves (88%) during Archery/General season were taken opportunistically.
- ❖ 9 of percent of hunters used calls (13 hunters).
- ❖ Avg. Distance Shot: 181 yards (68 hunters).

- ❖ Number harvested:
 - 119 hunters took 1 wolf.
 - 9 hunters took 2 wolves.
 - 1 hunter took 3 wolves.
 - 2 hunter took 1 wolf by hunting & 1 by trapping.
 - 1 hunter took 1 wolf by hunting & 2 trapping.
- ❖ Three hunters harvested a wolf with archery equipment.
- ❖ 24,479 wolf licenses were issued (22,169 resident; 2,310 nonresident).

Wolf Trapping

- ❖ 37 trappers took one wolf.
- ❖ 13 trappers took 2 wolves.
- ❖ 4 trappers took 3 wolves.
- ❖ 2 trappers took 4 wolves.

Harvested Wolves

- ❖ 43% on federal land; 13% on state land; 40% on private land (4% unknown).
- ❖ Wolves were harvested from approximately 46 different packs.

Sex

- ❖ 119 Females
- ❖ 111 Males

Color

- ❖ Gray 147
- ❖ Black 56
- ❖ White 7
- ❖ Unknown 20

Reported Health

- ❖ 24 with one or combination of mange, worn or broken teeth, fleas, worms, gashes, injuries to paws or legs, and one with a bobbed tail.

2013 Montana Wolf Hunting Season Report



2013 Gray Wolf Hunting Season Harvest Locations

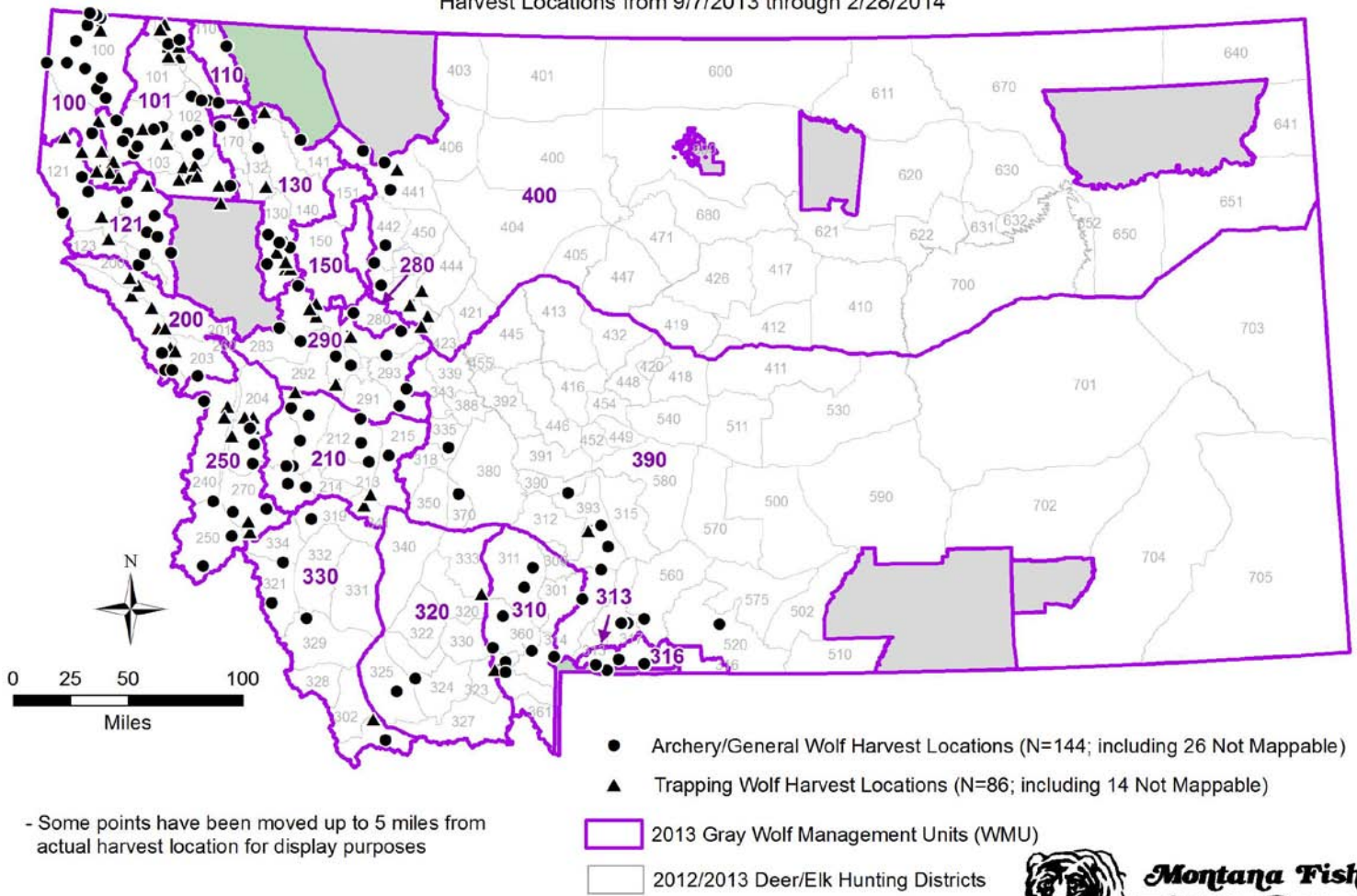
Of the statewide harvest, 84 percent came from:

The other counties include:

County	Hunter	Trapper	Total
Lincoln	25	21	46
Flathead	15	10	25
Ravalli	10	10	20
Sanders	11	6	17
Park	15	1	16
Powell	8	6	14
Mineral	4	9	13
Missoula	5	7	12
Granite	10	1	11
L & C	6	5	11

County	Hunter	Trapper	Total
Beaverhead	9	1	10
Gallatin	7	1	8
Madison	6	2	8
Lake	4	3	7
Teton	2	1	3
Silver Bow	-	3	3
Jefferson	2	-	2
Pondera	2	-	2
Deer Lodge	1	-	1
Stillwater	1	-	1

Harvest Locations from 9/7/2013 through 2/28/2014



- Some points have been moved up to 5 miles from actual harvest location for display purposes

